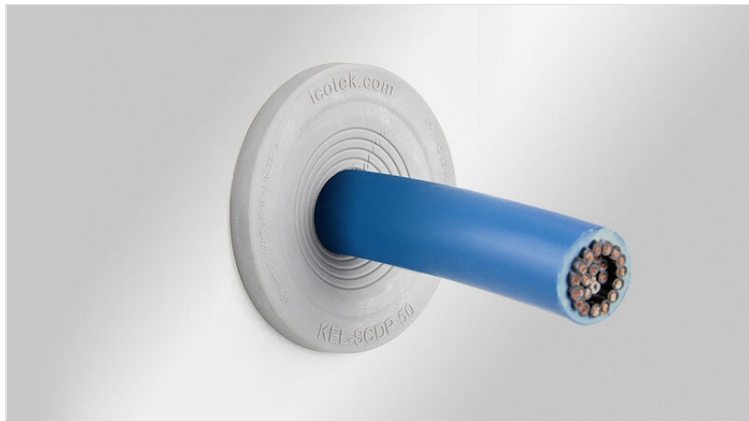


KEL-SCDP multi-range cable entry grommets

pluggable, for single cables with diameters up to 36 mm / IP65



With the KEL-SCDP cable entry grommet, single unterminated cables, hoses and conduits can be routed and sealed at a rating of IP65. Its unique advantage is the large sealing range.

The single circular membrane can be peeled away to accommodate the specific diameter of the cable or hose. For this purpose, only a small hole between the rings needs to be pierced. Then the corresponding ring can be removed. The peeled-off area is always round, ensuring a secure seal around cable/hose.

Another advantage is the high mounting flexibility. The KEL-SCDP can simply be plugged into cut-outs with wall thicknesses from 1.5 to 4.0 mm.

The version KEL-SCDP-RW is approved for the use in the railway technology in accordance with EN45545-2 HL3.

Operating temperature:

KEL-SCDP: -40 C° to 80 C°

KEL-SCDP-RW: -40 C° to 90 C°

IP54

IP55

IP64

IP65

RIWA

HL3

EN 45545-2



EN 61373



ECOLAB certified



ISO 4892-2A



PNEUMATICS



RoHS compliant



REACH COMPLIANCE

Made in Germany

Specifications

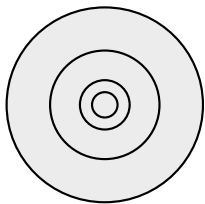
IP rating (EN 60529)	IP54, IP55, IP64, IP65
Material	Elastomer
Properties	halogen free, silicone free
Mounting options	Snap-in

Advantages & benefits

- Perfect edge protection and sealing (IP65)
- Circular membranes can be peeled off easily
- Quick assembly without tools

Product types & sizes

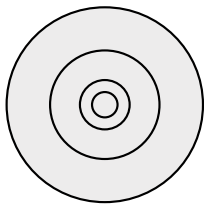
KEL-SCDP 25



Part No.	43480
EAN	4251269320811
Package quantity	10
For max. no. of cables	1
Max. cable diameter	16 mm
Height	11 mm
Mounting height	5 mm

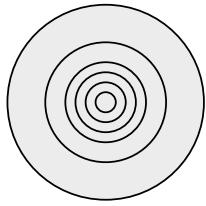
External diameter	32 mm
Cut-out size, round	25,3 mm
Cut-out size, metric	M25
For min. wall thickness	1,5 mm
For max. wall thickness	4 mm
Clamping range	1 x 5 - 16 mm

KEL-SCDP-RW 25

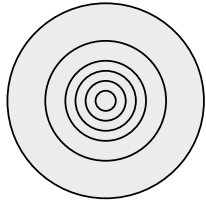


Part No.	43490
EAN	4251269320859
Package quantity	10
For max. no. of cables	1
Max. cable diameter	16 mm
Height	11 mm
Mounting height	5 mm

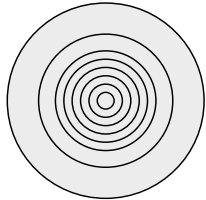
External diameter	32 mm
Cut-out size, round	25,3 mm
Cut-out size, metric	M25
For min. wall thickness	1,5 mm
For max. wall thickness	4 mm
Clamping range	1 x 5 - 16 mm

KEL-SCDP 32

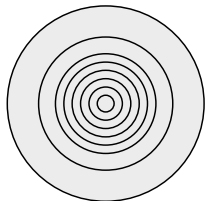
Part No.	43481	External diameter	39 mm
EAN	4251269320828	Cut-out size, round	32,3 mm
Package quantity	10	Cut-out size, metric	M32
For max. no. of cables	1	For min. wall thickness	1,5 mm
Max. cable diameter	22 mm	For max. wall thickness	4 mm
Height	11 mm	Clamping range	1 x 5 - 22 mm
Mounting height	5 mm		

KEL-SCDP-RW 32

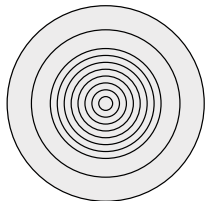
Part No.	43491	External diameter	39 mm
EAN	4251269320866	Cut-out size, round	32,3 mm
Package quantity	10	Cut-out size, metric	M32
For max. no. of cables	1	For min. wall thickness	1,5 mm
Max. cable diameter	22 mm	For max. wall thickness	4 mm
Height	11 mm	Clamping range	1 x 5 - 22 mm
Mounting height	5 mm		

KEL-SCDP 40

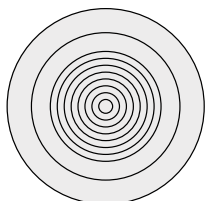
Part No.	43482	External diameter	47 mm
EAN	4251269320835	Cut-out size, round	40,4 mm
Package quantity	10	Cut-out size, metric	M40
For max. no. of cables	1	For min. wall thickness	1,5 mm
Max. cable diameter	28 mm	For max. wall thickness	4 mm
Height	11 mm	Clamping range	1 x 8 - 28 mm
Mounting height	5 mm		

KEL-SCDP-RW 40

Part No.	43492	External diameter	47 mm
EAN	4251269320873	Cut-out size, round	40,4 mm
Package quantity	10	Cut-out size, metric	M40
For max. no. of cables	1	For min. wall thickness	1,5 mm
Max. cable diameter	28 mm	For max. wall thickness	4 mm
Height	11 mm	Clamping range	1 x 8 - 28 mm
Mounting height	5 mm		

KEL-SCDP 50

Part No.	43483	External diameter	57 mm
EAN	4251269320842	Cut-out size, round	50,4 mm
Package quantity	10	Cut-out size, metric	M50
For max. no. of cables	1	For min. wall thickness	1,5 mm
Max. cable diameter	36 mm	For max. wall thickness	4 mm
Height	11 mm	Clamping range	1 x 8 - 36 mm
Mounting height	5 mm		

KEL-SCDP-RW 50

Part No.	43493	External diameter	57 mm
EAN	4251269320880	Cut-out size, round	50,4 mm
Package quantity	10	Cut-out size, metric	M50
For max. no. of cables	1	For min. wall thickness	1,5 mm
Max. cable diameter	36 mm	For max. wall thickness	4 mm
Height	11 mm	Clamping range	1 x 8 - 36 mm
Mounting height	5 mm		

