

# EMC-KEL-U | Split EMC cable entry frames

for shielding cables with connectors



RoHS  
compliant



Made in  
Germany

The EMC cable entry frames EMC-KEL-U are based on the KEL-U and KEL-E. Due to a conductive surface, disturbances in the cable shields on the control cabinet can be easily dissipated. Field bound disturbances are derived by the metallisation.

The cable entry system is easy to install. Cable grommets are placed into compartments and are securely fixed to the frame during assembly.

The EMC-KEL-U frames match exactly the cut-out dimensions for 16- and 24-pin standard industrial connectors. Either a cut-out of 36 mm or 46 mm in height can be chosen depending on the cables being routed.

The single-row versions EMC-KEL-E are particularly suited for flat connectors. The small frames are ideal for applications with limited space.

Between the EMC-KEL-U and the metal wall a conductive flat gasket (included) is mounted. The flange surface on the metal wall must be free of paint!

## Specifications

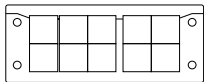
<b>Material</b>	Polyamide, highly conductive coating
<b>Flame class</b>	UL94-HB
<b>Operating temperature</b>	-40 C° to 140 C°
<b>Properties</b>	vibration proof
<b>Mounting options</b>	Screw type mounting

## Advantages & benefits

- Both conducted and field-bound disturbances can be reliably diverted
- Scratch-resistant surface
- Contacting the cable shield over 360°
- EMC grommets made entirely from conductive elastomer
- High cable density, wide variety of grommets
- Very good dissipation values
- Very good shielding effect with regard to EMC tightness

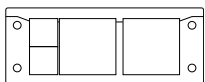
## Product types & sizes

### EMC-KEL-U 24|10

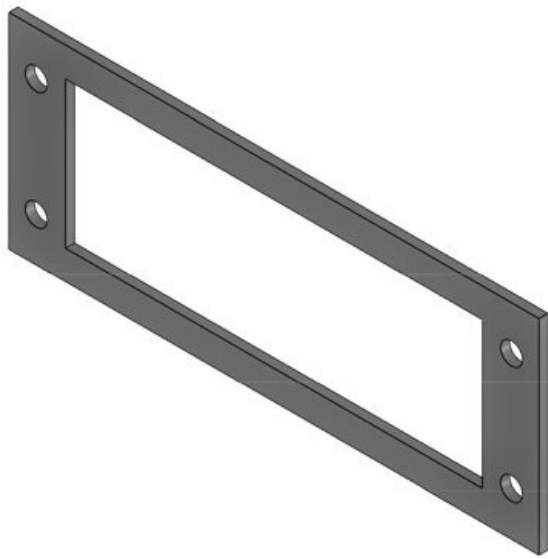


Part No.	<b>99400</b>	Height	<b>17 mm</b>
EAN	<b>4251269319365</b>	Mounting height	<b>17 mm</b>
Package quantity	<b>1</b>	Cut-out size	<b>112 x 36 mm</b>
For max. no. of cables	<b>10</b>	No. of screw holes	<b>4</b>
Max. cable diameter	<b>17 mm</b>	Diam. of screw holes	<b>5,8 mm</b>
Length	<b>147 mm</b>	Screw material	<b>Mild steel, galvanically zinc plated</b>
Width	<b>58 mm</b>	Suitable for grommets	<b>10 x EMC-KT small</b>

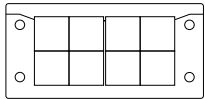
### EMC-KEL-U 24|4



Part No.	<b>99401</b>	Height	<b>17 mm</b>
EAN	<b>4251269319372</b>	Mounting height	<b>17 mm</b>
Package quantity	<b>1</b>	Cut-out size	<b>112 x 36 mm</b>
For max. no. of cables	<b>4</b>	No. of screw holes	<b>4</b>
Max. cable diameter	<b>35 mm</b>	Diam. of screw holes	<b>5,8 mm</b>
Length	<b>147 mm</b>	Screw material	<b>Mild steel, galvanically zinc plated</b>
Width	<b>58 mm</b>	Suitable for grommets	<b>2 x EMC-KT small 2 x EMC-KT large</b>

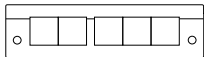


Part No.	<b>98047</b>	Cut-out size	<b>112 × 36 mm</b>
EAN	<b>4251269322655</b>	No. of screw holes	<b>4</b>
Package quantity	<b>1</b>	Diam. of screw holes	<b>6 mm</b>
Length	<b>145 mm</b>	Screw material	<b>Mild steel, galvanically zinc plated</b>
Width	<b>56 mm</b>		
Height	<b>2,5 mm</b>		
Mounting height	<b>2,5 mm</b>		

**EMC-KEL-U 16|8**

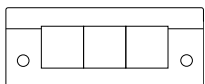
Part No.	<b>99402</b>
EAN	<b>4251269319389</b>
Package quantity	<b>1</b>
For max. no. of cables	<b>8</b>
Max. cable diameter	<b>17 mm</b>
Length	<b>120 mm</b>
Width	<b>58 mm</b>

Height	<b>17 mm</b>
Mounting height	<b>17 mm</b>
Cut-out size	<b>86 × 36 mm</b>
No. of screw holes	<b>4</b>
Diam. of screw holes	<b>5,8 mm</b>
Screw material	<b>Mild steel, galvanically zinc plated</b>
Suitable for grommets	<b>8 x EMC-KT small</b>

**EMC-KEL-E5**

Part No.	<b>99422</b>
EAN	<b>4251269319402</b>
Package quantity	<b>1</b>
For max. no. of cables	<b>5</b>
Max. cable diameter	<b>17 mm</b>
Length	<b>147 mm</b>
Width	<b>39 mm</b>

Height	<b>17 mm</b>
Mounting height	<b>17 mm</b>
Cut-out size	<b>112 × 24 mm</b>
No. of screw holes	<b>2</b>
Diam. of screw holes	<b>5,8 mm</b>
Screw material	<b>Mild steel, galvanically zinc plated</b>
Suitable for grommets	<b>5 x EMC-KT small</b>

**EMC-KEL-E3**

Part No.	<b>99420</b>
EAN	<b>4251269319396</b>
Package quantity	<b>1</b>
For max. no. of cables	<b>3</b>
Max. cable diameter	<b>17 mm</b>
Length	<b>98 mm</b>
Width	<b>39 mm</b>

Height	<b>17 mm</b>
Mounting height	<b>17 mm</b>
Cut-out size	<b>65 × 24 mm</b>
No. of screw holes	<b>2</b>
Diam. of screw holes	<b>5,8 mm</b>
Screw material	<b>Mild steel, galvanically zinc plated</b>
Suitable for grommets	<b>3 x EMC-KT small</b>

